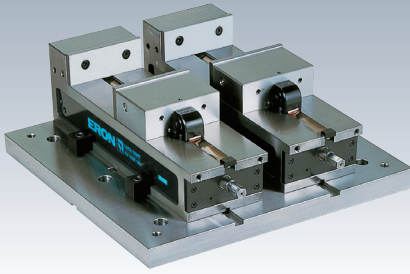


LTCV-2



RoHS Compliant

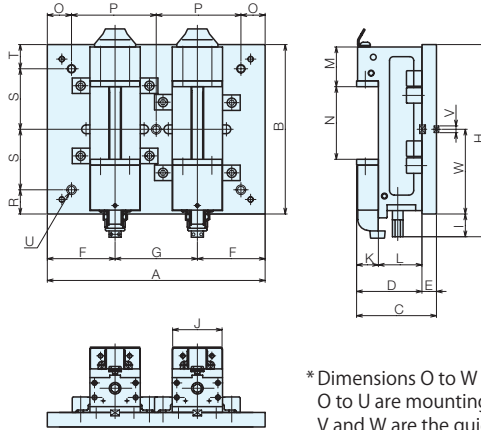


No.E-9990T

Lock-Tight CV Precision Machine Vises - Multiple Jaw Vises

Accessories Guide block ... 2 pieces per set
Handle ... 1

- Useful for machining multiple workpieces of the same type, performing multiple machining processes, and machining long workpieces.
- Locating to machine tables can be easily performed using guide blocks.
- Can also be used as a single vise.



▲ Lock-tight anti-floating mechanism

* Dimensions O to W are user specification
O to U are mounting hole dimensions
V and W are the guide block width and position

Specifications

Order No.	No.	Used Vise	A	B	C	D	E	F	G	H	I	J	K	L	M	N	Weight (kg)
976493	LTCV100-2	LTCV100	450	350	165	135	30	140	170	397	47	102	45	90	82	0-145	79
976494	LTCV125-2	LTCV125	450	400	170	140	30	130	190	455	55	125	50	90	82	0-210	102
976495	LTCV160-2	LTCV160	600	550	200	160	40	195	210	558	8	160	60	100	82	0-300	204
986420	LTCV100H-2	LTCV100H	450	350	165	135	30	140	170	398	48	102	45	90	82	0-145	80
986423	LTCV125H-2	LTCV125H	450	400	170	140	30	130	190	456	56	125	50	90	82	0-210	102
986426	LTCV160H-2	LTCV160H	600	550	200	160	40	195	210	559	9	160	60	100	82	0-300	204

Jig Set-up Systems (Q-lock)

Base Elements

Clamp Units

Clamping Parts

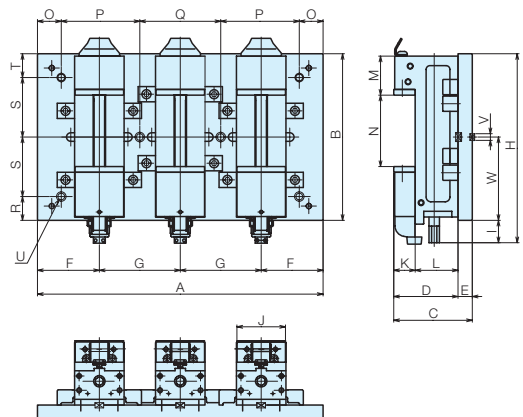
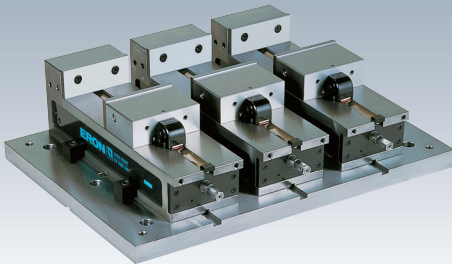
Mechanical Parts

Machine Vises

Surface Plates and Measurement Instruments

Index

LTCV-3

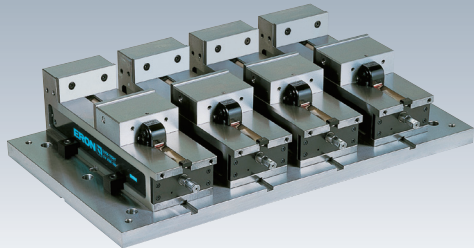


* Dimensions O to W are user specification
O to U are mounting hole dimensions
V and W are the guide block width and position

Specifications

Order No.	No.	Used Vise	A	B	C	D	E	F	G	H	I	J	K	L	M	N	Weight (kg)
976496	LTCV100-3	LTCV100	600	350	165	135	30	130	170	397	47	102	45	90	82	0-145	113
976497	LTCV125-3	LTCV125	650	400	170	140	30	135	190	455	55	125	50	90	82	0-210	146
976498	LTCV160-3	LTCV160	800	550	200	160	40	190	210	558	8	160	60	100	82	0-300	287
986421	LTCV100H-3	LTCV100H	600	350	165	135	30	130	170	398	48	102	45	90	82	0-145	114
986424	LTCV125H-3	LTCV125H	650	400	170	140	30	135	190	456	56	125	50	90	82	0-210	146
986427	LTCV160H-3	LTCV160H	800	550	200	160	40	190	210	559	9	160	60	100	82	0-300	287

LTCV-4



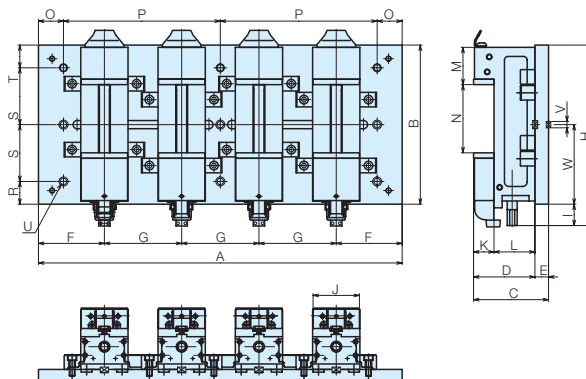
RoHS Compliant



No.E-9990T

Lock-Tight CV Precision Machine Visers - Multiple Jaw Visers

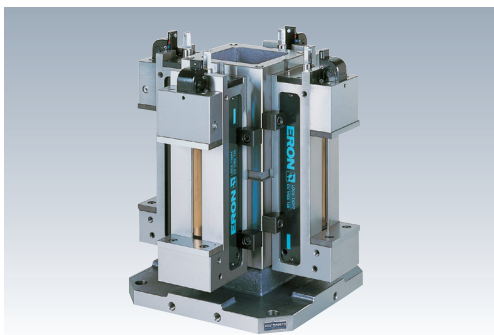
Accessories Guide block ... 2 pieces per set
Handle ... 1 piece



*Dimensions O to W are user specification
O to U are mounting hole dimensions
V and W are the guide block width and position

Specifications

Order No.	No.	Used Vise	A	B	C	D	E	F	G	H	I	J	K	L	M	N	Weight (kg)
976499	LTCV100-4	LTCV100	800	350	165	135	30	145	170	397	47	102	45	90	82	0-145	150
976500	LTCV125-4	LTCV125	900	400	170	140	30	165	190	455	55	125	50	90	82	0-210	206
976501	LTCV160-4	LTCV160	1000	550	200	160	40	185	210	558	8	160	60	100	82	0-300	372
986422	LTCV100H-4	LTCV100H	800	350	165	135	30	145	170	398	48	102	45	90	82	0-145	152
986425	LTCV125H-4	LTCV125H	900	400	170	140	30	165	190	456	56	125	50	90	82	0-210	206
986428	LTCV160H-4	LTCV160H	1000	550	200	160	40	185	210	559	9	160	60	100	82	0-300	372



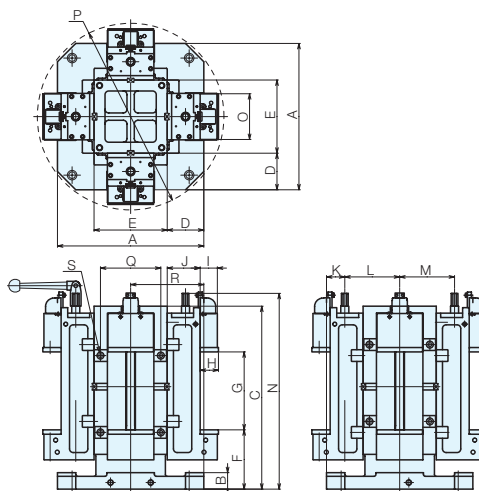
RoHS Compliant



No.E-9990I

4 Faces/Lock-Tight CV Precision Machine Visers

- Optimal for use as the jig for horizontal machining centers.
- Combines an MC Tooling Block with 4 CV precision visers. This is our most general-purpose jig.



Specifications

Order No.	No.	Used Vise	A	B	C	D	E	F	G	H	I	J	K	L	M	N	O	P	Q	R	S (Case Thread)	Weight (kg)
976502	LTCV125-400-4	LTCV125	400	35	500	100	200	162	210	50	47	90	50	150	150	535	125	φ510	165	200	M16x2	240
976503	LTCV160-500-4	LTCV160	500	40	600	125	250	162	300	60	57	100	67	183	183	638	160	φ730	200	250	M16x2	385
976504	LTCV160-630-4	LTCV160	630	55	600	190	250	177	300	60	57	100	132	183	183	653	160	φ810	200	315	M16x2	435

Lock-Tight CV Precision Machine Visers - Multiple Jaw Visers/4 Faces/Lock-Tight CV Precision Machine Visers

Jig Set-up Systems (Q-lock)

Base Elements

Clamp Units

Clamping Parts

Mechanical Parts

Machine Visers

Surface Plates and Measurement Instruments

Index