

RoHS Compliant

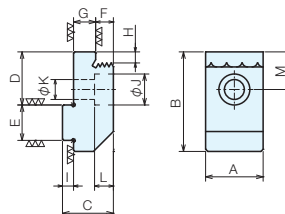
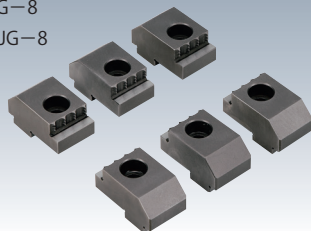
ERON®

No.E-9940B

Lock-Tight 5 Axis Machine Vises

Step Jaw Plates (Grid Type)

LT5AU-75SJG-8
LT5AU-100SJG-8



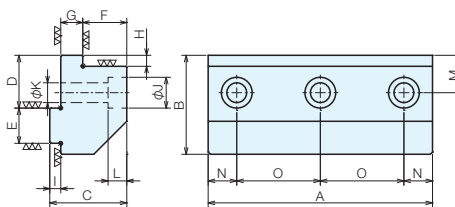
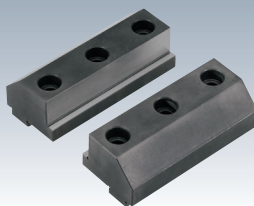
Specifications

Order No.	No.	Compatible Vises	A	B	C	D	E	F	G
124533	LT5AU75-SJG4	LT5AU-75(M,FM,F)	26	45	19	24	16	4	10
124534	LT5AU75-SJG6	LT5AU-75(M,FM,F)	26	45	21	24	16	6	10
993019	LT5AU75-SJG8	LT5AU-75(F,FM)	26	45	23	24	16	8	10
124535	LT5AU100-SJG4	LT5AU-100(M,FM,F)	26	45	19	24	16	4	10
124536	LT5AU100-SJG6	LT5AU-100(M,FM,F)	26	45	21	24	16	6	10
988807	LT5AU100-SJG8	LT5AU-100(M),100F(M)	26	45	23	24	16	8	10

No.	H	I	J	K	L	M	No. Supplied	Weight (kg)
LT5AU75-SJG4	5	5	14	9	8.5	17	2 pieces per set	0.24
LT5AU75-SJG6	5	5	14	9	8.5	17	2 pieces per set	0.26
LT5AU75-SJG8	5	5	14	9	8.5	17	2 pieces per set	0.3
LT5AU100-SJG4	5	5	14	9	8.5	17	6 pieces per set	0.72
LT5AU100-SJG6	5	5	14	9	8.5	17	6 pieces per set	0.78
LT5AU100-SJG8	5	5	14	9	8.5	17	6 pieces per set	0.85

Step Jaw Plates (Depth 20)

LT5AU-75SJ-20
LT5AU-100SJ-20



Specifications

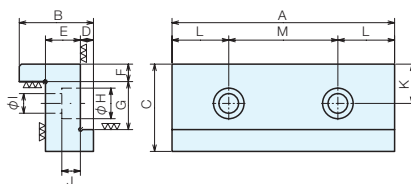
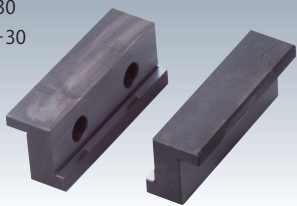
(2 pieces per set)

Order No.	No.	Compatible Vises	A	B	C	D	E	F	G	H
993020	LT5AU75-SJ20	LT5AU-75(F,FM)	75	45	35	24	16	20	10	5
988808	LT5AU100-SJ20	LT5AU-100(M),100F(M)	102	45	35	24	16	20	10	5

No.	I	J	K	L	M	N	O	Weight (kg)
LT5AU75-SJ20	5	14	9	8.5	17	13	49	1.3
LT5AU100-SJ20	5	14	9	8.5	17	13	38	1.5

Step Jaw Plates (Depth 30)

LT5AU-75SJ-30
LT5AU-100SJ-30



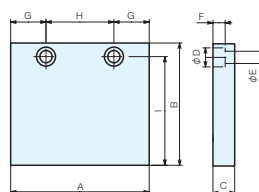
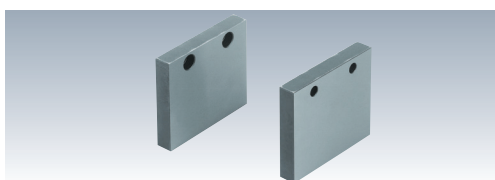
Specifications

(2 pieces per set)

Order No.	No.	Compatible Vises	A	B	C	D	E	F	G
993021	LT5AU75-SJ30	LT5AU-75	75	34	40	6	16	8	22
988809	LT5AU100-SJ30	LT5AU-100(M)	102	34	40	6	16	8	22

No.	H	I	J	K	L	M	Weight (kg)
LT5AU75-SJ30	14	9	8.5	18	21.5	32	0.9
LT5AU100-SJ30	14	9	8.5	18	26	50	1.7

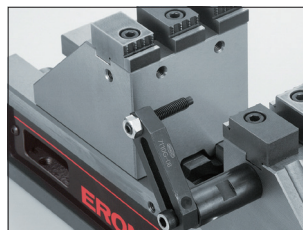
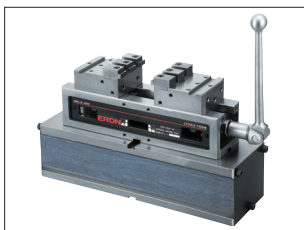
Standard Jaw Plates



Specifications

Order No.	No.	Compatible Vises	A	B	C	D	E	F	G	H	I	Weight (kg)
993023	LT5AU75-JA60	LT5AU-75	75	60	14	14	9	8.5	21.5	32	50	0.9
988810	LT5AU100-JA	LT5AU-100(M)	102	90	16	14	9	9	26	50	80	1.5

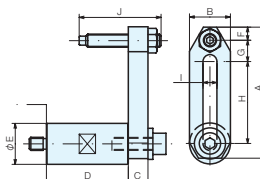
Usage Examples



Locating Workstop



Set Contents Joint ... 1 piece
Clamping G straight 7110G-08 ... 1 piece
Flat washer WF8 ... 1 piece
Hex bolt M8 × 25 ... 1 piece
Hex socket head set screw (dog point) M8 × 50 ... 1 piece
Hex nut M8 ... 1 piece



Specifications

Order No.	No.	Compatible Vises	A	B	C	D	E	F	G	H	I	J	Weight (kg)
988811	LT5AU100-WST	LT5AU - All models	80	25	12	50	25	17	13	50	8.5	50	0.4