



No.E-9939

Controllers ST120F/ST200F

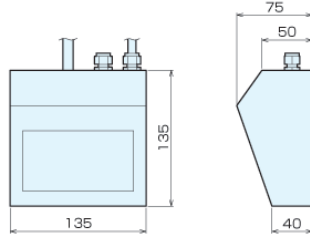
Specifications

Power supply: 200 V AC single phase 50/60 Hz
 Power cable length: 3.5m
 Output cable length: ST120F 2.5m/ST200 4.5m
 Remote control cable length: ST200F 6m
 *Maximmm 50A: In case of MTB510HD70S

Specifications and External Dimensions

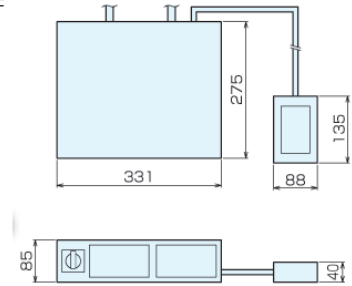
Order No.	No.	Weight (kg)
107694	ST120F	2.5

ST120F



Order No.	No.	Weight (kg)
107695	ST200F	5.9

ST200F



Jig Set-up Systems (Q-lock)

Base Elements

Clamp Units

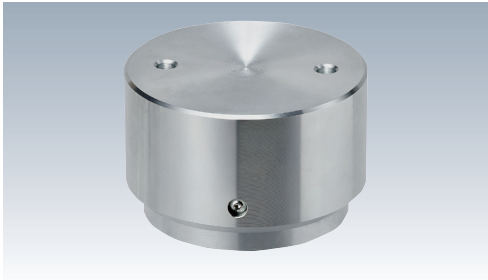
Clamping Parts

Mechanical Parts

Machine Vises

Surface Plates and Measurement Instruments

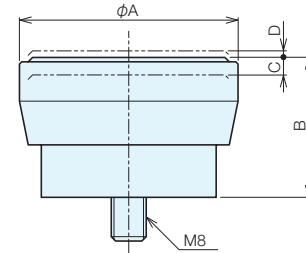
Index



No.E-9939

Mag-work Support

- Supports uneven workpieces
- Supports easy chattering workpieces



Specifications

Order No.	No.	A	B	C	D	Weight (kg)
100968	MWS-R50-32	57	32	2.5	1.5	0.4
123405	MWS-R76A-45	76	45	3	3	1.3

Accuracy stability of face milling for deformed workpieces or castings with a rough surface

For manual jigs

- Can be placed on height reference
- Cannot be tightened in the middle



For magnetic chucks

- Can be clamped to match the height reference
- Can also be clamped in the middle which cannot be tightened