



RoHS Compliant

ERON®

No.E-9659HC

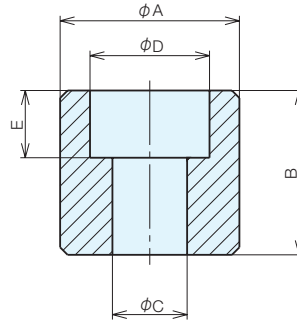
Height Cylinders for Q-Lock Elements

Material SCM420

Heat Treatment HRC60 heat treatment

Surface Treatment Blackened

- Deformations, machining vibrations, etc. in the jig base can be prevented by installing between each Q-Lock Element Pin.

Jig Set-up Systems
(Q-lock)

Base Elements

Clamp Units

Clamping Parts

Mechanical Parts

Machine Vises

Surface Plates and
Measurement Instruments

Index

Specifications

Order No.	No.	Compatible Q-Lock Elements	A	B ^{0.009 0.018}	C	D	E	Weight (g)
984125	QL-H0814	QLT19	24	14	9	15	8.5	30
125774	QL-H0817	QLA19(D,S)	24	17	9	15	8.5	30
984126	QL-H1220	QLT26	36	20	13	23	14	100
984128	QL-H1224	QLT40,QL(S/H)M10	56	30	18	26	17	480
984130	QL-H1630	QL(S/H)M07	56	25	18	26	17	400
125775	QL-H1226	QLA32(D,S)	36	26	13	23	14	150
984127	QL-H1222	QLT32	36	24	13	23	14	110
984129	QL-H1625	QL(S/H)M03	36	22	13	23	14	100
984131	QL-H1632	QL(S/H)M16	75	32	18	26	17	920
984132	QL-H1634	QLHM25	75	34	18	26	17	1080
996541	QL-H1236	QLTS26	36	36	13	23	14	170
996542	QL-H1652	QLTS40	56	52	18	26	17	860

Usage Examples

