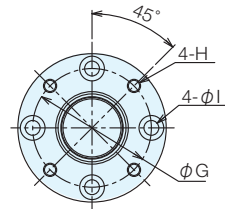
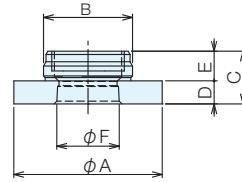


RoHS Compliant **NEW****ERON**<sup>®</sup>

No.E-9659C

## Q-Lock Elements Bushes (Pneumatic Type)

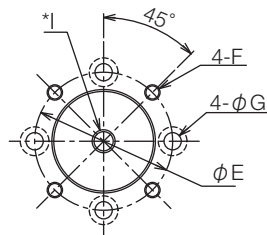
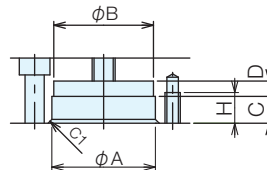
**Material** Main body: SCM440**Heat Treatment** Main body: HRC55 heat treatment

### Specifications and Prices

Type	Order No.	No.	A	B -0.016	C	D ± 0.005	E	F	G	H	I	Weight (kg)
Locate Bush	125745	QLA19RB	45	27	16	7	9	19	36	M4	4.5	0.1
	125754	QLA26RB	58	36	21	10	11	26	46	M5	5.5	0.17
	125764	QLA32RB	72	45	25	12	13	32	58	M6	6.5	0.33
Clamp Bush	125746	QLA19CB	45	27	16	7	9	18.5	36	M4	4.5	0.1
	125755	QLA26CB	58	36	21	10	11	25.5	46	M5	5.5	0.17
	125765	QLA32CB	72	45	25	12	13	31.5	58	M6	6.5	0.33

\* For locating pins and dia. pins, use a Locate Bush and for clamp pins, use a Clamp Bush.

### Mounting Dimensions



No.	A F <sub>6</sub>	B	C	D	E	F	G	H	I
QLA19	27	26	6	4	36	M4	4.5	8	M6
QLA26	36	35	9	3	46	M5	5.5	10	M6
QLA32	45	44	11	3	58	M6	6.5	12	M10

\* For I, use a plug as a lid. If you cannot release from the clamp due to an air-related problem, dismantle by using this hole.