

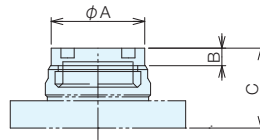
RoHS Compliant **NEW****ERON**<sup>®</sup>

No.E-9659C

## Q-Lock Elements Bush Cover (Pneumatic Type)

Material S45C

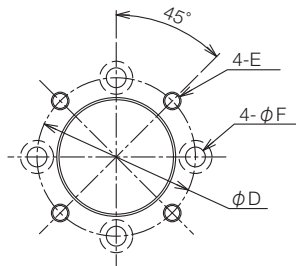
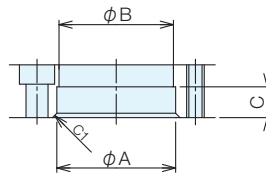
- When the jig plate is thin enough that the bush mounting hole may penetrate through, use the cover.



### Specifications and Prices

Order No.	No.	A	B	C	Weight (kg)
125747	QLA19BT	24	4.5	20.5	0.02
125756	QLA26BT	33	4.5	25.5	0.03
125766	QLA32BT	42.5	4.5	29.5	0.05

### Mounting Dimensions



No.	A F <sub>6</sub>	B	C	D	E	F
QLA19BT	27	26	6	36	M4	4.5
QLA26BT	36	35	8	46	M5	5.5
QLA32BT	45	44	10	58	M6	6.5

Jig Set-up Systems  
(Q-lock)

Base Elements

Clamp Units

Clamping Parts

Mechanical Parts

Machine Vises

Surface Plates and  
Measurement Instruments

Index