



RoHS Compliant



No.E-9659

## 2 Faces/MC Tooling Blocks with Q-Lock Elements

	Main body	Q-Lock Element	Height Cylinder	Rough Guide	Bottom Surface Rough Guide	Spacer
<b>Material</b>	FC250	SCM440	SCM420	MC Nylon	MC Nylon	S45C
<b>Heat Treatment</b>	Annealing	Heat treatment (HRC55)	Heat treatment (HRC55)	-	-	-
<b>Surface Treatment</b>	Painting (Cast Surface)	Non-electrolytic Plating	Blackened	-	-	-
<b>Accessories</b>	Eye bolt, Top plate					

- 2-face tooling blocks with Q-Lock Elements.
- Plates can be located and clamped with one touch by combining with compatible bushes.
- The position repeatability accuracy when using E-659P Attachment Plates with Q-Lock Elements is 3 μm .

Jig Set-up Systems (Q-lock)

Base Elements

Clamp Units

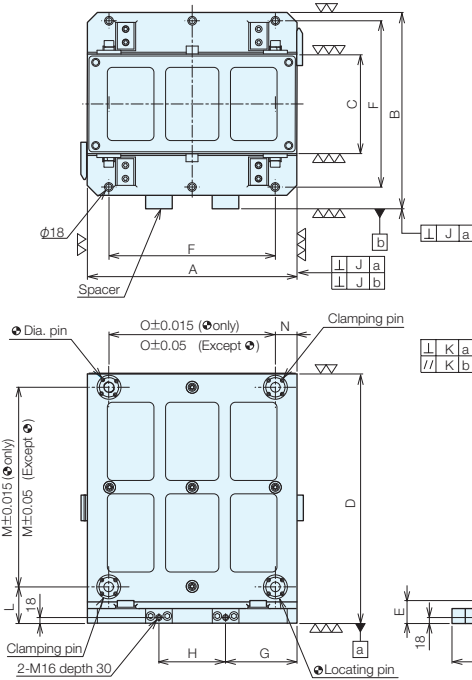
Clamping Parts

Mechanical Parts

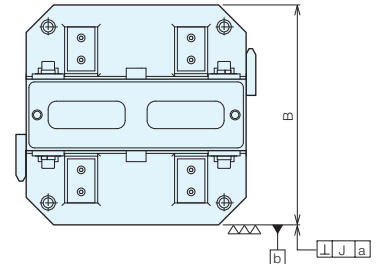
Machine Vises

Surface Plates and Measurement Instruments

Index



TBQ400TS does not have a spacer.



### Specifications

Order No.	No.	A	B	C	D	E	F	Mounting Hole Diameter	Number of Mounting Holes	G	H	I
983083	TBQ400TS	400	400	130	550	64	320	φ 18	4	145	110	225
968870	TBQ500TS	500	475	200	650	69	400	φ 18	4	175	150	275
968871	TBQ630TS	630	590	300	750	69	500	φ 18	6	215	200	340

No.	J	K	L	M	N	O	Locating Pin	Dia. Pin	Clamping Pin	Weight (kg)
TBQ400TS	0.01/500	0.02/500	115	400	40	320	QLT26RP	QLT26DP	QLT26CP	126
TBQ500TS	0.01/500	0.02/500	110	500	50	400	QLT26RP	QLT26DP	QLT26CP	195
TBQ630TS	0.01/500	0.02/500	110	600	65	500	QLT32RP	QLT32DP	QLT32CP	315

\* Custom-made products to suit your specifications are also available.

Please specify your desired dimensions and weight.

Palette Size	C	D	Weight (kg)