

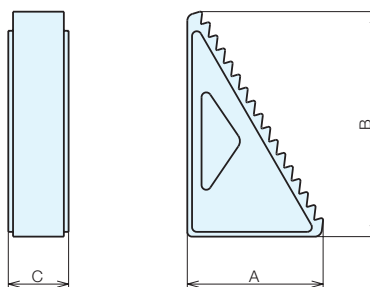
RoHS Compliant

**ERON**<sup>®</sup>

No.E-9467

## Pla Step Blocks

Material Engineering plastic (PBT resin)



### Specifications

Order No.	No.	A	B	C	Weight (g)
929982	PSB1	17.4	28.8	25.4	9
929983	PSB2	27.4	45.3	25.4	12
929984	PSB3	57.2	97.75	25.4	48

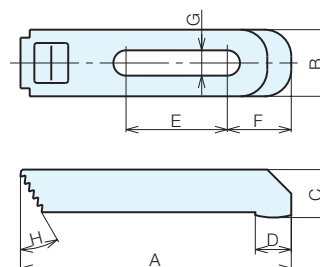
RoHS Compliant

**ERON**<sup>®</sup>

No.E-9468

## Pla Step Clamps

Material Engineering plastic (PBT resin)



### Specifications

Order No.	No.	A	B	C	D	E	F	G	H	Weight (g)
929985	PSC1	63.5	25	13.5	11	16	20.5	9.5	30	12
929986	PSC2	101.6	25	18	13.5	38	24	9.5	30	29
929987	PSC3	152.4	29	21.5	16.6	73	27	9.5	30	50

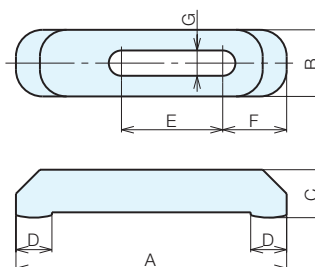
RoHS Compliant

**ERON**<sup>®</sup>

No.E-9469

## Pla Plain Clamps

Material Engineering plastic (PBT resin)



### Specifications

Order No.	No.	A	B	C	D	E	F	G	Weight (g)
929988	PPC1	63.5	25	13.5	11	20.5	20.5	9.5	15
929989	PPC2	101.6	25	18	13.5	38	24	9.5	30
929990	PPC3	152.4	29	21.5	16.7	56	27	9.5	53

Jig Set-up Systems  
(Q-lock)

Base Elements

Clamp Units

Clamping Parts

Mechanical Parts

Machine Vises

Surface Plates and  
Measurement Instruments

Index