

RoHS Compliant

ERON®

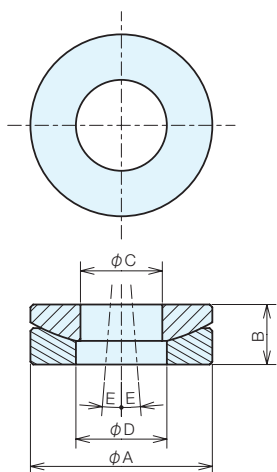
No.E-9426

Self-Aligning Washers

Material SUM22 **Heat Treatment** HRC30 ± 5 heat treatment

Surface Treatment Blackened

- Provides consistently stable clamping without affecting the parallelism of the workpiece, bolt, etc.
- Comes as a matching set.



Specifications

Order No.	No.	Compatible Bolts	A	B	C	D	E	Weight (g)	
903431	SW 8M	M8	19	6.2	9	10	3°	13	
903432	SW10M	M10	22	8	11	12	3°	19	
903433	SW12M	M12	25	8	13	14	2°	24	
903434	SW14M	M14	28	9	15	16	2°	33	
903435	SW16M	M16	35	10	17	18	2°	58	
903436	SW18M	M18	35	10	19	20	2°	50	
903437	SW20M	M20	42	12	21	22	1.5°	87	
903438	SW22M	M22	45	11	24	25	2°	110	
903439	SW24M	M24	50	12.7	27	28	3°	150	

Jig Set-up Systems (Q-lock)

Base Elements

Clamp Units

Clamping Parts

Mechanical Parts

Machine Vises

Surface Plates and Measurement Instruments

Index