



No.E-94235

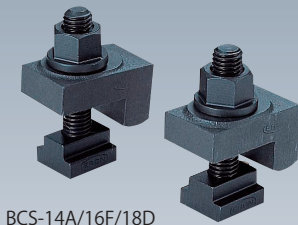
RoHS Compliant

Clamping Sets

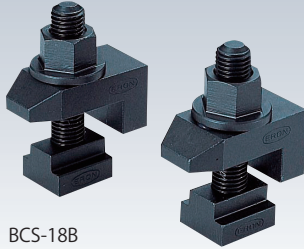
Material S45C **Heat Treatment** Heat treatment

Surface Treatment Blackened

- Clamping sets for MC machine sub-plates.



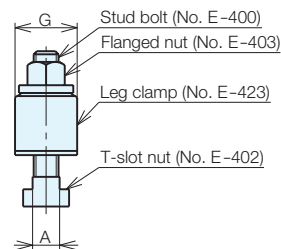
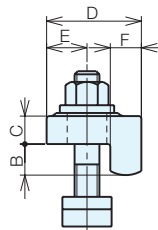
BCS-14A/16F/18D



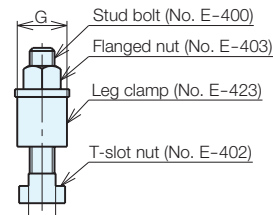
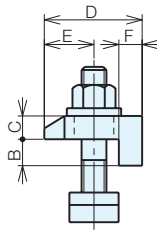
BCS-18B

2 pieces per set

BCS-14A/16F/18D



BCS-18B



Specifications

Order No.	No.	Compatible T-slot Width: A	Compatible Models
935853	BCS14A	14	SBP-0540/0626 (T)
935860	BCS16F	16	SBP-0830 (T)
935862	BCS18B	18	SBP-0645/0855/0950 (T)
935864	BCS18D	18	SBP-0960/1060/1260/1355/1570 (T)

No.	B	C	D	E	F	Details			
						Leg Clamps	T-Slot Nuts	Stud Bolts	Flanged Nuts
BCS14A	12	12	42	14-22.5	12	LC12	TNM1412	BM01275	FNM0012
BCS16F	16	16	54	18-28.5	16	LC14	TNM1614	BM01475	FNM0014
BCS18B	17	15	61	28-36	15	LCMC161	TNM1816	BM16100	FNM0016
BCS18D	20	20	63	22-30	20	LC16	TNM1816	BM16100	FNM0016

* You should use at least 2 sets (4 pieces) for attaching to MC machine sub-plates.

Jig Set-up Systems
(Q-lock)

Base Elements

Clamp Units

Clamping Parts

Mechanical Parts

Machine Vises

Surface Plates and
Measurement Instruments

Index