



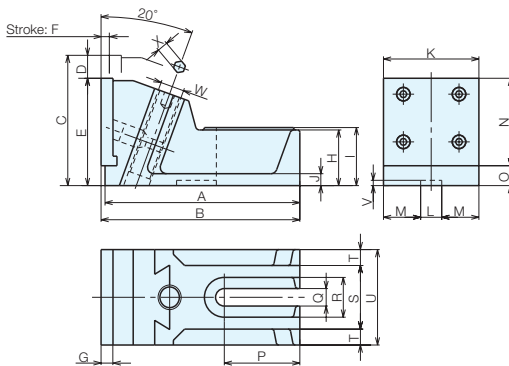
RoHS Compliant



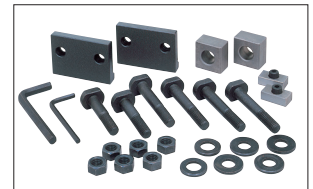
No.E-9231

Pull Down Free Jaw Vises

- Can be used when a bigger opening that cannot be obtained using an ordinary machine vise is needed.
- Any size of workpiece can be clamped to match the table, including planar, shaper, miller, and boring machine.
- Since the workpiece is clamped by pulling down, floating up is prevented in spite of the powerful clamping force.
- The main body uses Nabeya special ductile cast iron, and does not break.
- The keys are the high accuracy and ground finish.



Standard Accessories PV-1



Standard Accessories PV-2 and PV-3

Accessories

	Standard Guide Block (2 pieces per set)	Serrated Jaw plate	T-slot Bolt	Hex Nut	Washer	Fixed Block	Hex Bolt	Large Angle Wrench (For Clamping and for Jaw Plates)
PV0	-	2 pieces	-	-	M12: 2 pieces	-	M12×45 2 pieces	1 pieces of each
PV1	-	2 pieces	M14: Compatible T-slot 14.18 4 pieces	M14: 4 pieces	M14: 4 pieces	-	-	1 pieces of each
PV2	Compatible groove width 18 mm 1 set	2 pieces	M14: Compatible T-slot 14.18 6 pieces	M14: 6 pieces	M14: 6 pieces	2 pieces	-	1 pieces of each
PV3	Compatible groove width 18 mm 1 set	2 pieces	M18: Compatible T-slot 18.22 6 pieces	M18: 6 pieces	M18: 6 pieces	2 pieces	-	1 pieces of each

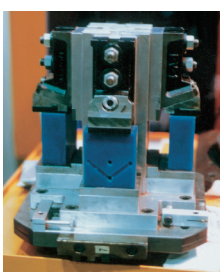
Size Chart

No.	A	B	C	D	E	F	G	H	I	J	K	L	M	N	O	P	Q	R	S	T	U	V	W	X
PV0	70	73	50	8	42	3	9	21	23	5	46	-	-	30	12	9	135	25	36	5	46	-	Tr18P2	6
PV1	127	130	64	8	56	3	10	30	32	7	62	-	-	40	16	51	15	32	48	7	62	-	Tr22P4	8
PV2	180	186	102	20	82	7	12	40	43	12	85	18	34.5	60	22	73	19	40	65	10	85	5	Tr28P4	10
PV3	245	250	164	29	135	10.5	15	70	73	15	120	18	49	110	25	95	22	50	80	20	120	6	Tr30P6	14

Specifications

Order No.	No.	Jaw Width	Minimum Height	Maximum Height	Standard Guide Block Width	Set Weight (kg)	(2 pieces per set)
927331	PV0	46	42	50	-	1.5	
900536	PV1	62	56	64	-	4.8	
900537	PV2	85	82	102	18	12.5	
900538	PV3	120	135	164	18	39.1	

Usage Examples



Jig Set-up Systems (Q-lock)

Base Elements

Clamp Units

Clamping Parts

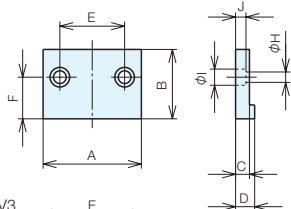
Mechanical Parts

Machine Vises

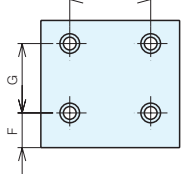
Surface Plates and Measurement Instruments

Index

PV0, 1, 2



PV3



■ Jaw Plates/Specifications

Compatible Models	A	B	C	D	E	F	G	H	I	J	Compatible Bolts
PV0	46	30	9	12	26	20	-	5.5	9.5	5.5	M5
PV1	62	40	10	13	36	25	-	6.5	11	7	M6
PV2	85	60	12	16.5	56	36	-	9	14	9	M8
PV3	120	110	15	20	70	30	60	11	17	11	M10

Compatible Models	Standard Jaw Plates (Coarse)			Standard Jaw Plates (Smooth)		
	Order No.	No.		Order No.	No.	
PV0	931362	PV0-JA-A		931358	PV0-JA-H	
PV1	931363	PV1-JA-A		931359	PV1-JA-H	
PV2	931364	PV2-JA-A		931360	PV2-JA-H	
PV3	931365	PV3-JA-A		931361	PV3-JA-H	

■ Main Screw/Specifications

Compatible Models	Order No.	No.	
PV0	943889	PV0-SP	
PV1	943890	PV1-SP	
PV2	943891	PV2-SP	
PV3	943892	PV3-SP	

■ Reference Pages



Jig Set-up Systems (Q-lock)

Base Elements

Clamp Units

Clamping Parts

Mechanical Parts

Machine Vises

Surface Plates and Measurement Instruments

Index