



No.E-9175A

RoHS Compliant

Attachment for Clamping Support Jack

Material S45C

Heat Treatment CSA-1 hemispheric pad:HRC55 ± 3 heat treatment
CSA-3, 4, 5, 6, 1F:HRC30 ± 3 heat treatment

Surface Treatment Blackened

- You can choose an attachment suitable for the workpiece from a variety of attachments.
- These attachments are designed for the No.E-9175 clamping support screw and the No.E-9176 support screw jack.



CSA-1



CSA-2



CSA-3



CSA-4



CSA-5



CSA-6



CSA-1F

Reference Pages

Clamping Support Screw Jack

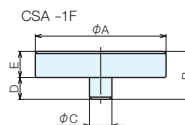
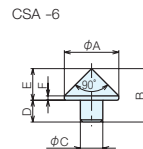
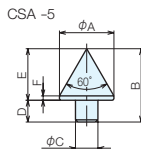
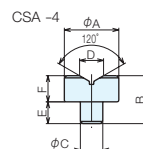
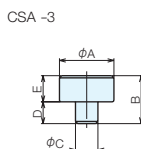
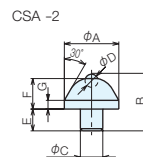
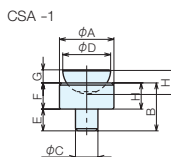


P.124 ▶

Screw Jack



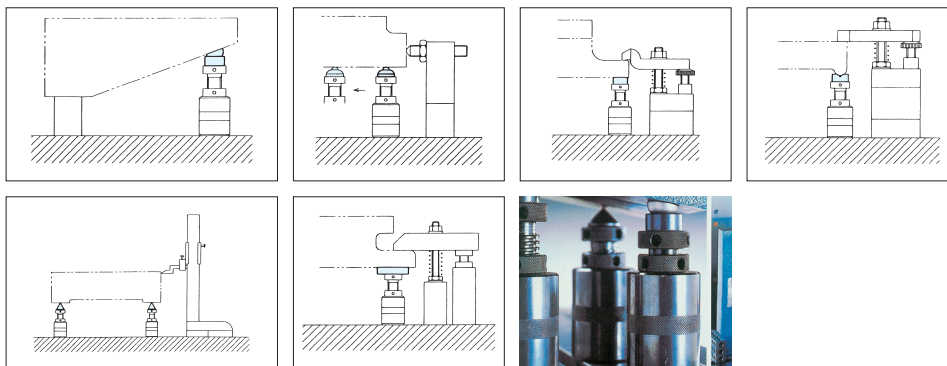
P.126 ▶



Specifications and Prices

Order No.	No.	A	B	C	D	E	F	G	H	Weight (g)
900336	CSA1	25	28	10.3	22	10	12	6	11	80
900337	CSA2	25	26	10.3	6	10	14	4	-	60
900338	CSA3	25	22	10.3	10	12	-	-	-	60
900339	CSA4	25	22	10.3	11	10	12	-	-	60
900340	CSA5	25	33.7	10.3	10	23.7	2	-	-	55
900341	CSA6	25	24.5	10.3	10	14.5	2	-	-	45
903461	CSA1F	60	22	10.3	10	12	-	-	-	347

Usage Examples



Jig Set-up Systems (Q-lock)

Base Elements

Clamp Units

Clamping Parts

Mechanical Parts

Machine Vises

Surface Plates and Measurement Instruments

Index