

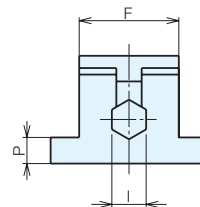
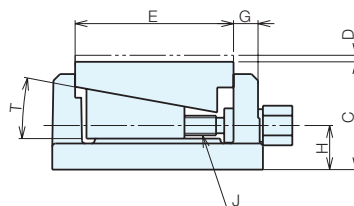
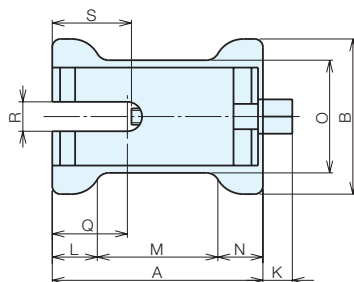
RoHS Compliant

NBK®

No.E-9123

## Leveling Block Type C

- Offers high accuracy.
- Reduces installation work cost.
- Can be fixed using an anchor bolt.
- Offers the best rigidity.
- Easy installation.
- Most suitable for installing machines such as milling machines, radial drilling machines, planers and surface plates.



### Size Chart

No.	A	B	C	D	E	F	G	H	I
<b>C1</b>	129	95	66	4	95	62	17	29	21
<b>C2</b>	172	142	80	5	130	84	21	35	26
<b>C3</b>	215	165	105	6	159	100	29	43	29
<b>C4</b>	215	165	105	6	159	100	29	43	35

No.	J	K	L	M	N	O	P	Q	R	S	T
<b>C1</b>	M12 × 1.75 (coarse thread)	17	30	69	30	69	16	45	18	57.5	10° 26'
<b>C2</b>	M16 × 2 (coarse thread)	19.5	35	102	35	100	17	65	22	75	10° 26'
<b>C3</b>	M20 × 2.5 (coarse thread)	24	45	125	45	120	25	75	32	86.5	10° 26'
<b>C4</b>	φ 19 trapezoidal thread 6 threads per inch	25	45	125	45	120	25	75	32	86.5	10° 26'

### Specifications

Order No.	No.	Stroke	Lifting Height	Maximum Allowable Load (kN)	Weight (kg)
<b>902098</b>	<b>C1</b>	66- 70	4	7	3.3
<b>902099</b>	<b>C2</b>	80- 85	5	15	8
<b>902100</b>	<b>C3</b>	105-111	6	25	15
<b>902101</b>	<b>C4</b>	105-111	6	45	15