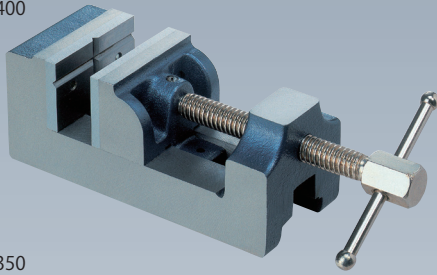
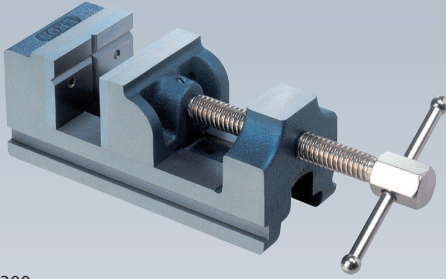


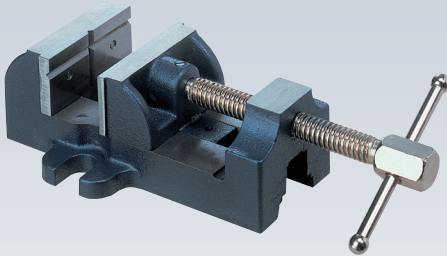
P150/P250/  
P400



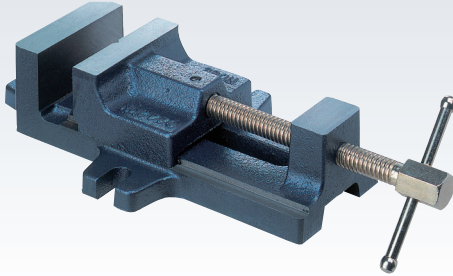
P350



P300



P770



Jig Set-up Systems  
(Q-lock)

Base Elements

Clamp Units

Clamping Parts

Mechanical Parts

Machine Vises

Surface Plates and  
Measurement Instruments

Index

RoHS Compliant

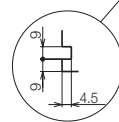
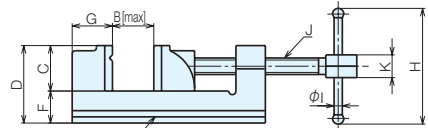
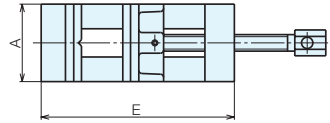


No.E-9117

# Drill Press Vises

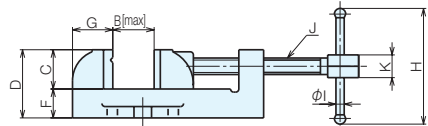
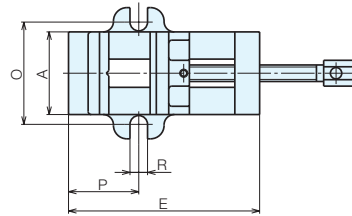
- All faces are finished except the handle end face.  
(P150, P250, P350, P400)
- Top faces and side faces have a ground finish for high accuracy.
- Jaw plates are fitted to both the main body and movable body.  
(Excluding the P770)
- The P350, P400, P300, and P770 use an Acme thread for the feed screw, allowing for powerful clamping.
- The handle lever stop ball is cold headed, and absolutely will not fall off.

P150 \*P350  
P400 P250

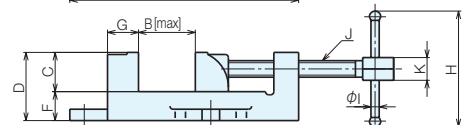
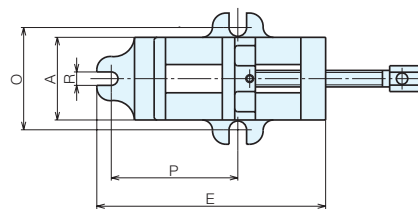


\* The clamping groove is fitted to the side face only for the P350.

P300



P770



## Size Chart

No.	A	B	C	D	E	F	G
P150	38	38	25	47	108	22	25.5
P250	62	64	38	67	158	29	37
P350	75	79	45	76	186	31	38.5
P400	101.5	104	45	83	238	38	48
P300	81	84	38	66	183	28	37.5
P770	94	105	42.5	66	273	23.5	24

No.	H	I	J	K	O	P	R
P150	46	5	W3/8 16 threads per inch	φ 12	-	-	-
P250	97	8	W1/2 12 threads per inch	φ 19	-	-	-
P350	114	8	TW16 8 threads per inch	Hex 22	-	-	-
P400	114	8	TW16 8 threads per inch	Hex 22	-	-	-
P300	114	8	TW16 8 threads per inch	Hex 22	101	66.5	17
P770	114	8	TW16 8 threads per inch	Hex 22	127	127	13

## Specifications

Order No.	No.	Jaw Width	Jaw Depth	Jaw Opening	Weight (kg)	
900079	P150	38	25	38	0.8	
900493	P250	62	38	64	2.6	
900494	P350	75	45	79	4.4	
900495	P400	101.5	45	104	7.7	
900499	P300	81	38	84	3.9	
900500	P770	94	42.5	105	5.2	

## Accessories

### Jaw plates (2 pieces per set)

Compatible Models	Order No.	No.	
P150,P150A	930959	P150-JA	
P250,P250A,P250AS	930960	P250-JA	
P350,P350A,P350AS	930962	P350-JA	
P400,P400A,P400AS	930963	P400-JA	
P300	930961	P300-JA	

### Back plate

Compatible Models	Order No.	No.	
P150,P150A	943915	P150-BP	
P250,P250A,P250AS,P300	943916	P250-BP	
P350,P350A,P350AS	943917	P350-BP	
P400,P400A,P400AS,P770	943918	P400-BP	

### Spindle

Compatible Models	Order No.	No.	
P150	943909	P150 -SP	
P150A	943910	P150A-SP	
P250	943911	P250 -SP	
P250A,P250AS	943912	P250A-SP	
P350	946805	P350 -SP	
P350A,P350AS,P400,P770	943913	P400 -SP	
P400A,P400AS	943914	P400A-SP	

Jig Set-up Systems  
(Q-lock)

Base Elements

Clamp Units

Clamping Parts

Mechanical Parts

Machine Vises

Surface Plates and  
Measurement Instruments

Index