



RoHS Compliant **NEW**



No.E-9659C

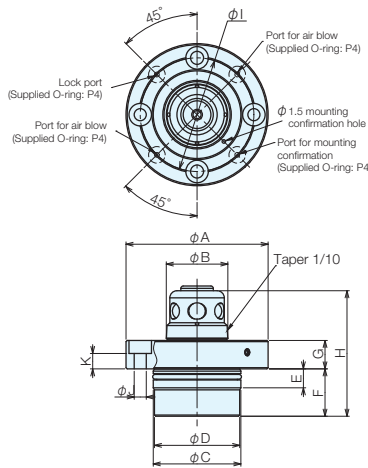
Q-Lock Elements Pins

(Pneumatic Type Double Action)

Material Main body: SU S440C

Heat Treatment Main body: HRC55 heat treatment

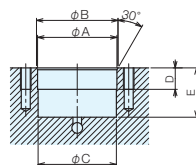
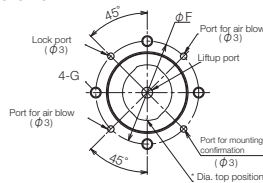
- Double acting (clamping using air)
- With air blow and mounting confirmation
- Vertical MC for light cutting
- Air is used for clamping and unclamping.
- Automatic replacement of jigs is supported by changing the valve.
- A system can be built easily by using the air pipes within a factory.



Specifications and Prices

Type	Order No.	No.	A	B	C h5	D	E	F	G ± 0.005	H	I	J	K	Weight (kg)
Locating Pin	125739	QLA19DRP	54	19	33	32	8	16.5	10	42.5	44	4.5	5.5	0.23
	125748	QLA26DRP	60	26	37	36	8	20	12	53	48	5.5	6.6	0.3
	125757	QLA32DRP	72	32	46	45	8	26.5	14	65.5	58	7	7.5	0.63
Dia. Pin	125740	QLA19DDP	54	19	33	32	8	16.5	10	42.5	44	4.5	5.5	0.23
	125749	QLA26DDP	60	26	37	36	8	20	12	53	48	5.5	6.6	0.3
	125758	QLA32DDP	72	32	46	45	8	26.5	14	65.5	58	7	7.5	0.63
Clamp Pin	125741	QLA19DCP	54	17.8	33	32	8	16.5	10	42.5	44	4.5	5.5	0.23
	125750	QLA26DCP	60	24	37	36	8	20	12	53	48	5.5	6.6	0.3
	125759	QLA32DCP	72	30	46	45	8	26.5	14	65.5	58	7	7.5	0.63

Mounting Dimensions



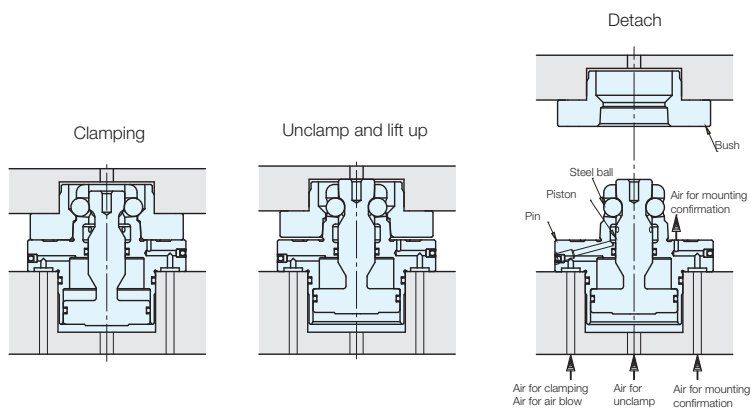
No.	A H7	B	C	D	E+0.30	F	G
QLA19D	33	34	32.5	10	19.5	44	M4
QLA26D	37	38	36.5	10	23	48	M5
QLA32D	46	47	45.5	10	29.5	58	M6

* The relationship between the dia. pin top position and the tap hole is as shown in the diagram. Machine the tap holes and port holes according to the direction of the dia. pin.

Specifications

Drive Method	Clamping	Pneumatic		
	Unclamping	Pneumatic		
No.		QLA19 D	QLA26 D	QLA32 D
Clamping Force (kN) (at 0.5 MPa)		1	1.5	2.4
Liftup Force (kN) (at 0.5 MPa)		0.28	0.36	0.62
Clamp Stroke (mm)		4	4.5	5
Amount of Lift Up (mm)		1		
Cylinder Volume (cm ³)	Clamp Side	2.6	3.65	6.2
	Unclamp Side	2.7	3.85	6.76
Maximum Usage Pressure (MPa)		1		
Minimum Usage Pressure (MPa)		0.4		
Guaranteed Withstand Pressure (MPa)		1.5		
Recommended Air Blow Pressure (MPa)		0.5		
Used Fluid		Dry Air		
Ambient Operating Temperature (° C)		0-65		
Weight (kg)		0.23	0.3	0.63

Section Drawing



Jig Set-up Systems
(Q-lock)

Base Elements

Clamp Units

Clamping Parts

Mechanical Parts

Machine Vises

Surface Plates and
Measurement Instruments

Index