



NEW

ERON®

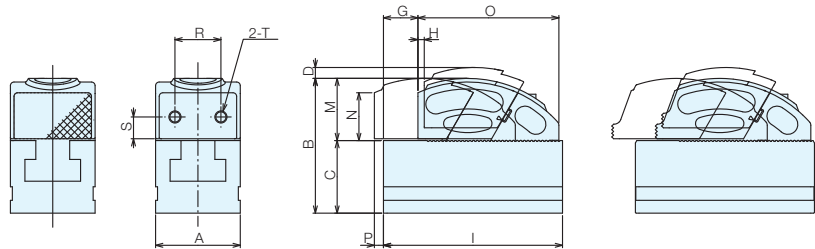
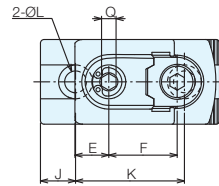
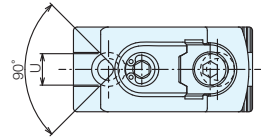
No.E-9460

## Wedge Clamping Parts with a Base

**Material** SCM440

**Heat Treatment** Main body: HRC30 ± 3 heat treatment  
Movable body: HRC50 ± 3 heat treatment

**Surface Treatment** Blackened



### Size Chart

No.	A	B	C	D	E	F	G	H	I	J	K	L	M	N	O	P	Q	R	S	T (Coarse Thread)
DKC08-FJ	35	56	30	4.5	14	28.3	14	2.5	74	14.5	45	9	26	19	58.5	3.5	6	19	9	M5xP0.8x8
DKC12-FJ	45	67.5	35	6	17	35.7	20	3.5	96	18	60	11	32.5	25	75	5.5	10	25	12	M6xP1.0x9
DKC08-TJ	35	56	30	4.5	20	28.3	8	2.5	74	14.5	45	9	26	7	64.5	9.5	6	-	-	-
DKC12-TJ	45	67.5	35	6	28	35.7	9	3.5	96	18	60	11	32.5	8	86	16.5	10	-	-	-
DKC08-GJ	35	56	30	4.5	15.5	28.3	12.5	2.5	74	14.5	45	9	26	19.5	60	5	6	-	-	-
DKC12-GJ	45	67.5	35	6	18.5	35.7	18.5	3.5	96	18	60	11	32.5	25	76.5	7	10	-	-	-
DKC08-VJ	35	56	30	4.5	17	28.3	11	2.5	74	14.5	45	9	26	18	61.5	6.5	6	13	-	-
DKC12-VJ	45	67.5	35	6	25	35.7	12	3.5	96	18	60	11	32.5	21	83	13.5	10	21	-	-

### Specifications and Prices

Order No.	No.	Movable Body Shape	Weight (kg)
125680	DKC08-FJ	Flat	0.8
125681	DKC12-FJ	Flat	1.5
125682	DKC08-TJ	Toe	0.8
125683	DKC12-TJ	Toe	1.6
125684	DKC08-GJ	Grip	0.8
125685	DKC12-GJ	Grip	1.5
125686	DKC08-VJ	V type	0.8
125687	DKC12-VJ	V type	1.6